



## GILBERT HOUSE, LONDON, EC2Y 8BD

£542 Per Week

1 Bedrooms | 1 Bathrooms | To Let

### Property Features

- One Bedroom Apartment
- Newly Fitted Bathroom
- Fully Furnished
- South Facing Balcony
- Modernised Kitchen
- Wooden Flooring
- Sixth Floor
- Available Mid April

AVAILABLE NOW. - Situated on the 6th floor of GILBERT HOUSE in the BARBICAN is this one bedroom apartment (type 71). The property has a re-fitted kitchen with full size fridge / freezer, washer dryer, dish washer and fully tiled bathroom. The flat has the added advantage of a wonderful south facing balcony which has a spectacular views over the City. This property is offered part-furnished.

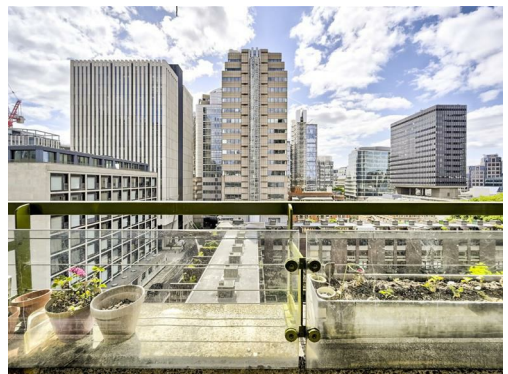
GILBERT HOUSE is situated close to BARBICAN station, St PAUL'S (Central Line) Moorgate and the new Crossrail Station at FARRINGDON. Within walking distance are Waitrose, Marks & Spencer and Tesco. Also within easy reach are St. Pauls' Cathedral, The River, South Bank, Tate Modern, and the One New Change Shopping Complex with various shops, restaurants and bars. The Barbican Arts Centre with its many bars, restaurants, theatre, cinema's, gallery and library is within easy walking distance.

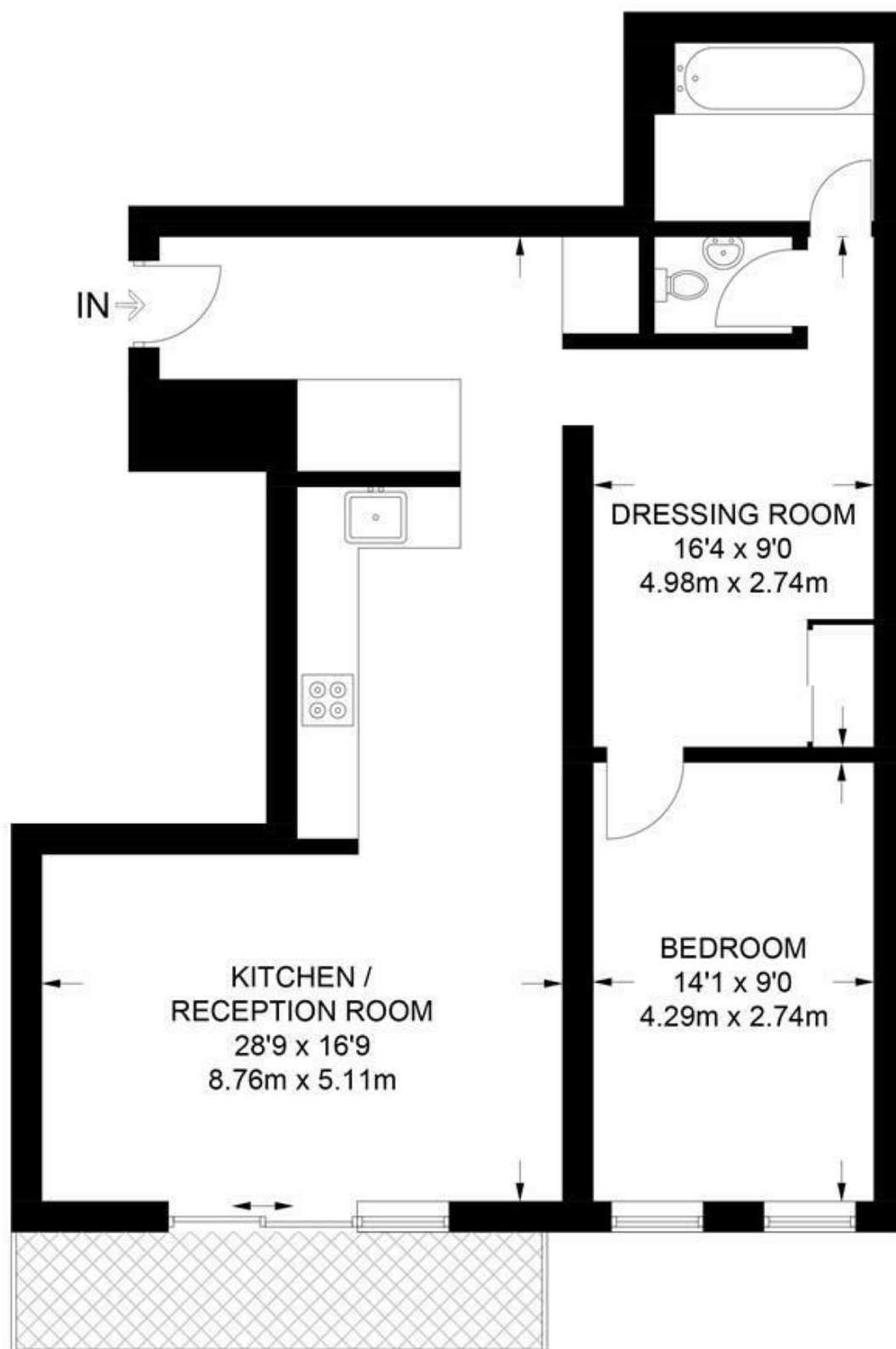
Deposit: 5 Weeks Rent

No Agency Fee

Tenancy: 12 month contract, 6 Month break clause

Council Tax: Band E = £1,557.20 per year (25% discount for single occupancy).



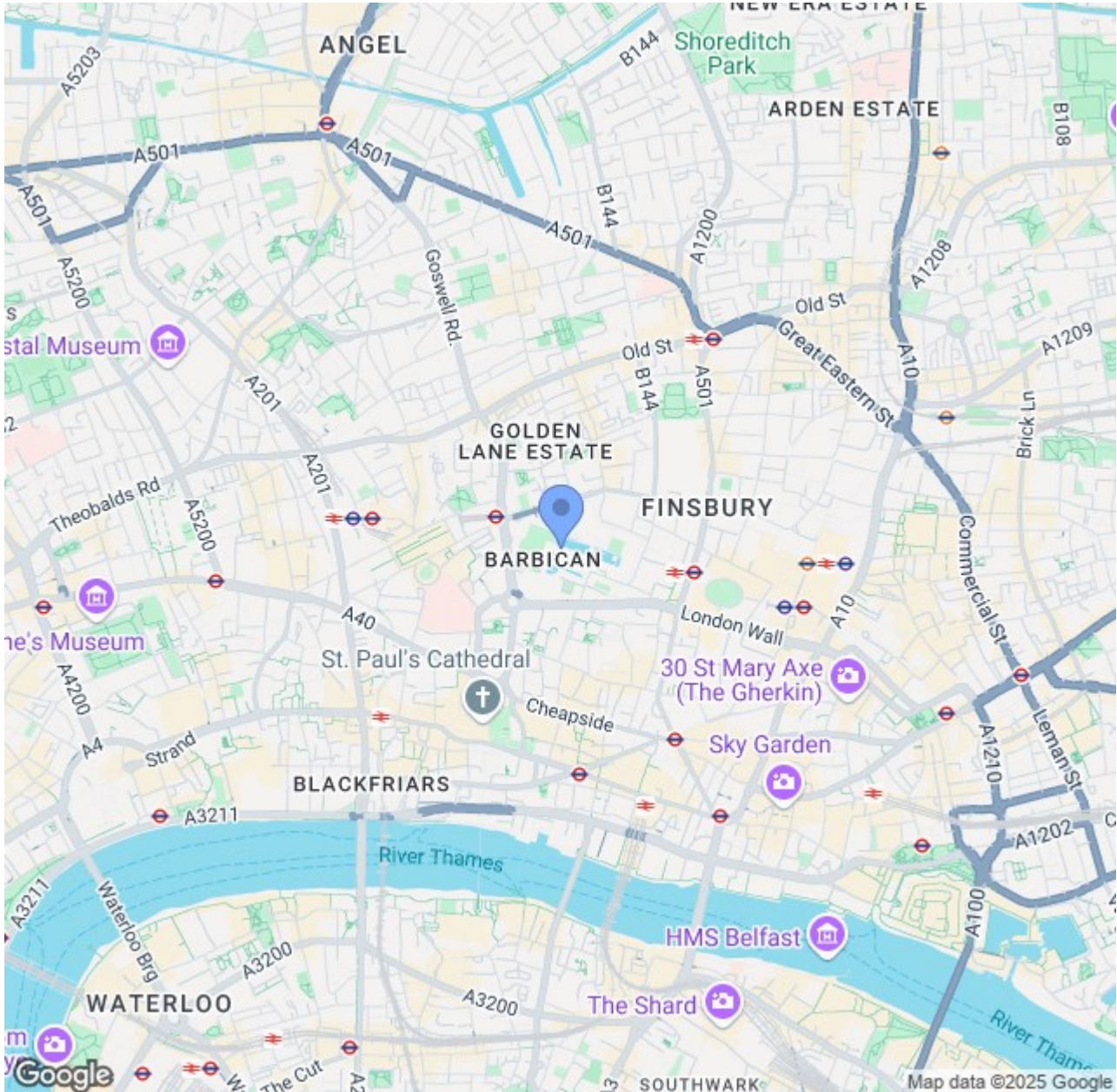


## SIXTH FLOOR

**APPROXIMATE GROSS INTERNAL AREA**  
**735 SQ FT / 68.3 SQ M**

This plan has been drawn for illustrative and identification purposes only.





## CONTACT US ABOUT THIS PROPERTY

122 Newgate Street, London, EC1A 7AA

T: 020 7600 0026

F: 020 7600 0025

E: [property@scottcity.co.uk](mailto:property@scottcity.co.uk)



Energy Efficiency Rating		
	Current	Potential
Very energy efficient - lower running costs		
(92-plus) <b>A</b>		
(81-91) <b>B</b>		
(69-80) <b>C</b>		
(55-68) <b>D</b>		
(39-54) <b>E</b>		
(21-38) <b>F</b>		
(1-20) <b>G</b>		
Not energy efficient - higher running costs		
England & Wales		EU Directive 2002/91/EC